



Here is What Awaits You!

[Surface Water Management Overview](#)

[Awards and Licenses](#)

[ENGEO News and More!](#)

A Message from ENGEO's CEO



Last year was another record-breaking year for ENGEO. We accomplished ambitious goals in technical excellence throughout the organisation. We also built many new client relationships and welcomed several passionate, brilliant new team members. Additionally, our presence in Australia has grown to include a brand-new Gold Coast operation in Queensland.

This year, we eagerly hunt for new efficiencies, technical skillsets, and technological capabilities. We look forward to being on the cutting edge of technology and integration of AI into our processes. As you'll read in this issue of the ENGEO View, winters bring challenging projects, which our slope hazard and landslide response teams are definitely keen to manage.

Thank you for your ongoing trust and support. We hope you enjoy this issue of the ENGEO View and look forward to sharing many 2024 milestones with you!

Surface Water Management Overview



ENGEO's Surface Water Management Services

ENGEO specialises in complex creek restoration projects, bridge scour protection, and stormwater requirements, both during and post-construction.

ENGEO offers traditional [Hydraulics and Hydrology Services](#) as well as [Stormwater Management Services](#) to meet new water quality standards.



NZ Water Resources Engineering Team Members

Mark Broughton, *CMEngNZ, CPEng, RecEng DSAP, RecEng PIC*
Chase Hemming, *PE, CMEngNZ*
Francis Smith
Sean Berry
Sharon Tenger
Louwrens le Roux

[Learn More](#) about their journey.

ENGEO Global Surface Water Management Projects

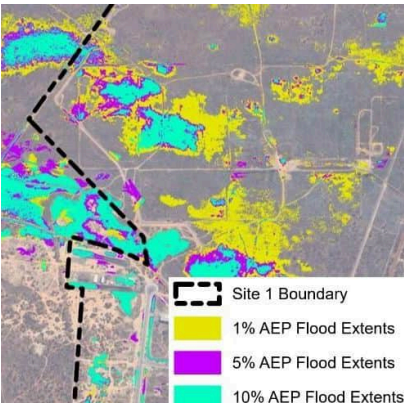


KiwiRail NIMT Ongarue River Assessment

The purpose of our recent assessment was to aid KiwiRail in prioritising where to implement river stabilisation measures in order to increase the NIMT's long-term resiliency. In the study area.

The Ongarue River is approximately 30 m (100 feet) wide and characterised by large meanders cutting through pasture-converted floodplains. The maximum recorded flowrate in the river is approximately 570 cubic meters per second (20,000 cubic feet per second).

[Learn More](#)



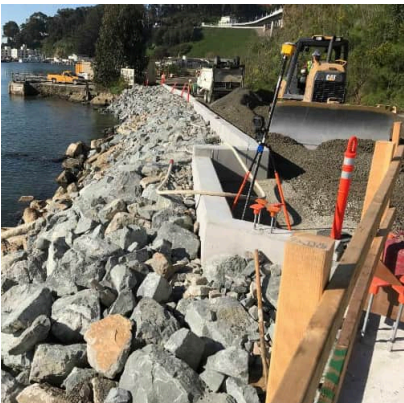
Australia Flood Assessments

We recently performed flood assessments for two clean energy projects – one involving a hydrogen power plant and the other a wind farm.

The Hydrogen Jobs Plan is a project for the Government of South Australia involving the construction of a world leading hydrogen power plant, electrolyser, and storage facility.

The Carmody Hill Wind Farm project comprises 45 wind turbine generators and two substations. ENGEO's flood level assessment was used by the project's Civil Engineer to determine finished floor levels and design the stormwater conveyance system.

[Learn More](#)



San Francisco - Oakland Bay Bridge Foundation Removal

Collaborating closely with Caltrans and the Kiewit / Manson JV Team, we managed the Stormwater Pollution Prevention Plan (SWPPP) and ensured regulatory compliance throughout the project. Utilising innovative solutions, including the use of a "bubble curtain" during underwater blasting, the environmental impact was significantly minimised.

This project underscores our commitment to sustainability and innovation in engineering.

[Learn More](#)



ENGEO's Emergency Response: Oakland Zoo Entrance Repair

On December 31, 2022, a sudden collapse of an 1800 mm (72-inch) culvert beneath the entrance road to the Oakland Zoo disrupted operations, leading to a shutdown and substantial economic losses.

We performed permitting support, monitored the creek during storms and heavy flow, prepared construction plans, and performed testing and observation services for the project. We also performed hydraulic calculations and developed plans and a list of bid items for removal of the failed culvert and construction of the new culvert.

[Learn More](#)

ENGEO Excellence



Congratulations to Newly Promoted Associates and Principals!

These outstanding individuals are promoted to **Associates**:

Ian McCreery, PE, GE
Matt Packard, CMEngNZ,
Adam Smith, CMEngNZ,
Alexis Colina, CPEng, RPEQ, NER
Mark Broughton, CPEng

Congratulations to our newly appointed **Principals**:

Jeff Braun, PE, GE, PM
Matthew Swanson, PE, QSD
Benjamin O'Loughlin, CMEngNZ
Josh Armstrong, RPGEQ
Tomasz Krawczynski, CMEngNZ-RPEQ
David Brodie, BEng(Hons)

[Learn More](#) about their bios.



Newly Chartered Professionals

Congratulations to these newly chartered individuals:

Peter Basaly,
Chartered Professional Engineer,
Mark Broughton,
Recognised Dam Engineer (PIC and DSAP)
Gabriela Staehle,
Certified Environmental Practitioner
Gareth Ward,
Certified Environmental Practitioner
Jimmy Whitmore,
Certified Environmental Practitioner
Karen Jones,
Chartered Member (Engineering Geologist)
Vince Pettinger,
Certified Environmental Practitioner

Let's Celebrate Excellence!

This year ENGEO won the **2023 ASCE Region 9 Outstanding Geotechnical Engineering Project Award** for Treasure Island Development Phase 1.

[Learn More](#) about this award.

[Learn More](#) about this project.

